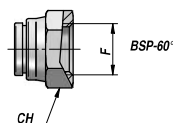


TAPPO FEMMINA GIREVOLE
FEMALE PLUG

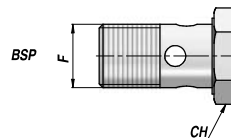
RV414



Codice Code	F BSP	CH	kg x 100
RV414.0200	NEW! 1/8"	14	1,15
RV414.0400	1/4"	19	2,49
RV414.0600	3/8"	22	3,80
RV414.0800	1/2"	27	6,40
RV414.1000	NEW! 5/8"	30	7,40
RV414.1200	3/4"	32	9,40
RV414.1600	1"	38	13,84
RV414.2000	NEW! 1"1/4"	50	32,80
RV414.2400	NEW! 1"1/2"	55	40,29
RV414.3200	NEW! 2"	70	65,44

BULLONE FORATO
BOLT FOR BANJO

RV431

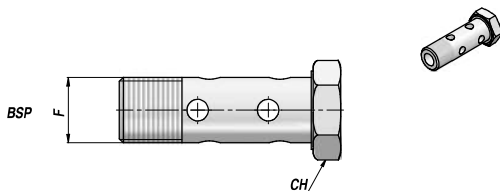


Codice Code	F BSP	CH	kg x 100
RV431.0300	NEW! 1/8"	14	1,30
RV431.0400	1/4"	19	3,32
RV431.0600	3/8"	22	5,69
RV431.0800	1/2"	27	8,93
RV431.1000	NEW! 5/8"	30	11,00
RV431.1200	3/4"	32	17,50
RV431.1600	1"	41	34,40

MATERIALE : ACCIAIO (A RICHIESTA : ACCIAIO INOX AISI 316) - MATERIAL : STEEL (ON REQUEST : STAINLESS STEEL AISI 316)

BULLONE FORATO DOPPIO
DOUBLE BOLT FOR BANJO

RV441

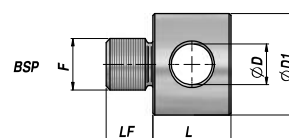


Codice Code	F BSP	CH	kg x 100
RV441.0400	1/4"	19	4,02
RV441.0600	3/8"	22	7,45
RV441.0800	1/2"	27	12,65
RV441.1200	3/4"	32	24,60
RV441.1600	NEW! 1"	41	47,00

GOLFARE
RINGBOLT

NEW!

RV540



Codice Code	F BSP	ØD	ØD1	L	LF	kg x 100
RV540.0400	1/4"	10,5	26	22	12	8,00
RV540.0600	3/8"	10,5	26	22	12	9,00
RV540.0800	1/2"	10,5	26	22	12	10,00

MATERIALE : ACCIAIO (A RICHIESTA : ACCIAIO INOX AISI 316) - MATERIAL : STEEL (ON REQUEST : STAINLESS STEEL AISI 316)