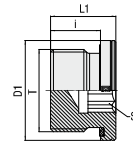


Blanking Screw for Ports Type FI-VS-...-R-WD



Ordering Codes

***FI-VS*-R*1/2*-WD*-B*-W3**

* Blanking Screw for Ports

* Thread Type Whitworth Parallel
Pipe Thread (BSPP)

* Thread Size acc. to dimension table

Please always indicate thread sizes, e.g. 1/2!

* Seal Type Profile Sealing Ring

* Seal Material NBR (Buna-N®)
FKM (Viton®)
EPDM

* Material Code Steel, zinc/nickel-plated

Please contact STAUFF for alternative
materials and surface finishings.

FI-VS

R

1/2

-WD

-B

-V

-E

-W3

Spare Parts / Accessories



Profile Sealing Ring
Type **WDG**

Page 206

Whitworth Parallel Pipe Thread (BSPP)

Profile Sealing Ring

PN (^{bar} / _{psi})	Dimensions (^{mm} / _{in})					Torque (^{Nm} / _{ft·lb})	Weight (^{kg} / _{lbs}) Ca. per 100	Ordering Codes
	Thread T	D1	L1	i	S1			
400	G 1/8	14	12,3	8	5	15	0,70	FI-VS-R1/8-WD-B-W3
5800		,55	,48	,31	,20	11,1	1,54	
400	G 1/4	19	17,3	12	6	25	1,90	FI-VS-R1/4-WD-B-W3
5800		,75	,68	,47	,24	18,5	4,18	
400	G 3/8	22	17,3	12	8	50	2,70	FI-VS-R3/8-WD-B-W3
5800		,87	,68	,47	,31	37,0	5,94	
400	G 1/2	27	19,3	14	10	70	4,60	FI-VS-R1/2-WD-B-W3
5800		1,06	,76	,55	,39	51,8	10,12	
400	G 3/4	32	21,3	16	12	120	8,00	FI-VS-R3/4-WD-B-W3
5800		1,26	,84	,63	,47	88,8	17,60	
400	G 1	40	22,8	16	17	200	12,80	FI-VS-R1-WD-B-W3
5800		1,57	,90	,63	,67	148,0	28,16	
315	G 1 1/4	50	22,8	16	22	320	19,90	FI-VS-R1-1/4-WD-B-W3
4568		1,97	,90	,63	,87	236,8	43,78	
315	G 1 1/2	55	22,8	16	24	400	26,20	FI-VS-R1-1/2-WD-B-W3
4568		2,17	,90	,63	,94	296,0	57,64	

Standard seal material is NBR (Buna-N®).

Male threaded studs were designed for female threaded ports in components made of steel. For applications with components made of softer mating materials (e.g. Aluminium), the use of connectors with additionally rolled male threads is recommended.

Please contact STAUFF prior to the assembly for further information.

Male stud acc. to ISO 1179-2 (Type E)

Port acc. to ISO 1179-1

Torque recommendations for Steel mating material.

