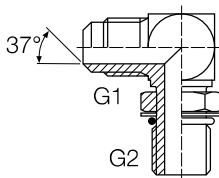


**Einschraubverschraubung JIC-SAE 90°**

Einstellbarer Winkel Einschraub-  
stutzen, JIC-SAE, kompakt, 90°



G <sub>1</sub>	G <sub>2</sub>	Artikelnummer
7/16-20 UNF	7/16-20 UNF	A07JM-07SMR90K
<b>7/16-20 UNF</b>	<b>1/2-20 UNF</b>	<b>A07JM-08SMR90K</b>
<b>7/16-20 UNF</b>	<b>9/16-18 UNF</b>	<b>A07JM-09SMR90K</b>
<b>1/2-20 UNF</b>	<b>7/16-20 UNF</b>	<b>A08JM-07SMR90K</b>
<b>1/2-20 UNF</b>	<b>1/2-20 UNF</b>	<b>A08JM-08SMR90K</b>
1/2-20 UNF	9/16-18 UNF	A08JM-09SMR90K
9/16-18 UNF	7/16-20 UNF	A09JM-07SMR90K
9/16-18 UNF	1/2-20 UNF	A09JM-08SMR90K
9/16-18 UNF	9/16-18 UNF	A09JM-09SMR90K
9/16-18 UNF	3/4-16 UNF	A09JM-12SMR90K
<b>9/16-18 UNF</b>	<b>7/8-14 UNF</b>	<b>A09JM-14SMR90K</b>
3/4-16 UNF	9/16-18 UNF	A12JM-09SMR90K
3/4-16 UNF	3/4-16 UNF	A12JM-12SMR90K
<b>3/4-16 UNF</b>	<b>7/8-14 UNF</b>	<b>A12JM-14SMR90K</b>
<b>3/4-14 UNF</b>	<b>1.1/16-12 UN</b>	<b>A12JM-17SMR90K</b>
7/8-14 UNF	3/4-16 UNF	A14JM-12SMR90K
7/8-14 UNF	7/8-14 UNF	A14JM-14SMR90K
7/8-14 UNF	1.1/16-12 UN	A14JM-17SMR90K
1.1/16-12 UN	3/4-16 UNF	A17JM-12SMR90K
1.1/16-12 UN	7/8-14 UNF	A17JM-14SMR90K
1.1/16-12 UN	1.1/16-12 UN	A17JM-17SMR90K
1.1/16-12 UN	1.5/16-12 UN	A17JM-21SMR90K
1.3/16-12 UN	1.3/16-12 UN	A19JM-19SMR90K
<b>1.5/16-12 UN</b>	<b>7/8-14 UNF</b>	<b>A21JM-14SMR90K</b>
<b>1.5/16-12 UN</b>	<b>1.1/16-12 UN</b>	<b>A21JM-17SMR90K</b>
1.5/16-12 UN	1.5/16-12 UN	A21JM-21SMR90K
<b>1.5/16-12 UN</b>	<b>1.5/8-12 UN</b>	<b>A21JM-26SMR90K</b>
<b>1.5/8-12 UN</b>	<b>1.5/16-12 UN</b>	<b>A26JM-21SMR90K</b>
1.5/8-12 UN	1.5/8-12 UN	A26JM-26SMR90K
<b>1.7/8-12 UN</b>	<b>1.5/8-12 UN</b>	<b>A30JM-26SMR90K</b>
1.7/8-12 UN	1.7/8-12 UN	A30JM-30SMR90K
<b>2.1/2-12 UN</b>	<b>2.1/2-12 UN</b>	<b>A40JM-40SMR90K</b>