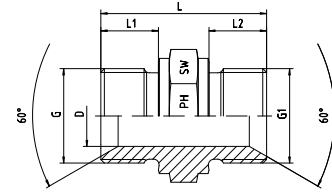


BSP - BSP
Mit 60°-Innenkonus und angedrehter Dichtkante
Form B
Männlich - Männlich

BSP - BSP
With 60°-Cone and Sealing Shoulder Form B
Male - Male - Parallel



| Druck Pressure | Gewinde Thread | | Ca. Maße Approx. Dimensions | | | | Bestellzeichen Order-Code | |
|-------------------|-------------------|-----------|--------------------------------|----|----|------|------------------------------|---------------|
| PN | G = BSP | G1 = BSP | L | L1 | L2 | D | SW | |
| 400 | 1/8"-28 | 1/8"-28 | 23,0 | 8 | 8 | 4,5 | 14 | 1050510-02-02 |
| 400 | 1/4"-19 | 1/4"-19 | 29,0 | 10 | 10 | 6,0 | 19 | 1050510-04-04 |
| 400 | 3/8"-19 | 3/8"-19 | 35,0 | 12 | 12 | 9,0 | 22 | 1050510-06-06 |
| 400 | 1/2"-14 | 1/2"-14 | 41,0 | 14 | 14 | 13,0 | 27 | 1050510-08-08 |
| 400 | 5/8"-14 | 5/8"-14 | 43,5 | 16 | 16 | 14,5 | 30 | 1050510-10-10 |
| 400 | 3/4"-14 | 3/4"-14 | 46,0 | 16 | 16 | 18,0 | 32 | 1050510-12-12 |
| 400 | 1"-11 | 1"-11 | 52,0 | 18 | 18 | 23,5 | 41 | 1050510-16-16 |
| 200 | 1 1/4"-11 | 1 1/4"-11 | 58,0 | 20 | 20 | 30,0 | 50 | 1050510-20-20 |
| 200 | 1 1/2"-11 | 1 1/2"-11 | 61,0 | 22 | 22 | 37,0 | 55 | 1050510-24-24 |
| 100 | 2"-11 | 2"-11 | 67,0 | 25 | 25 | 45,0 | 70 | 1050510-32-32 |
| 70 | 2 1/2"-11 | 2 1/2"-11 | 70,0 | 26 | 26 | 51,0 | 90 | 1050510-40-40 |