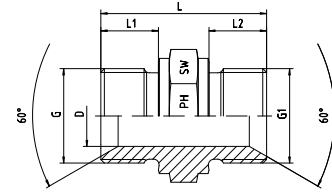


BSP - BSP  
Mit 60°-Innenkonus und angedrehter Dichtkante  
Form B  
Männlich - Männlich

BSP - BSP  
With 60°-Cone and Sealing Shoulder Form B  
Male - Male - Parallel



Druck Pressure	Gewinde Thread		Ca. Maße Approx. Dimensions				Bestellzeichen Order-Code	
PN	G = BSP	G1 = BSP	L	L1	L2	D	SW	
400	1/8"-28	1/8"-28	23,0	8	8	4,5	14	1050510-02-02
400	1/4"-19	1/4"-19	29,0	10	10	6,0	19	1050510-04-04
400	3/8"-19	3/8"-19	35,0	12	12	9,0	22	1050510-06-06
400	1/2"-14	1/2"-14	41,0	14	14	13,0	27	1050510-08-08
400	5/8"-14	5/8"-14	43,5	16	16	14,5	30	1050510-10-10
400	3/4"-14	3/4"-14	46,0	16	16	18,0	32	1050510-12-12
400	1"-11	1"-11	52,0	18	18	23,5	41	1050510-16-16
200	1 1/4"-11	1 1/4"-11	58,0	20	20	30,0	50	1050510-20-20
200	1 1/2"-11	1 1/2"-11	61,0	22	22	37,0	55	1050510-24-24
100	2"-11	2"-11	67,0	25	25	45,0	70	1050510-32-32
70	2 1/2"-11	2 1/2"-11	70,0	26	26	51,0	90	1050510-40-40