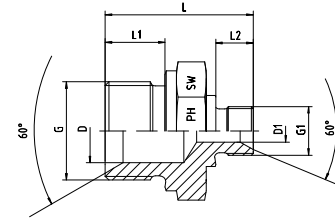


GERADE ADAPTER STRAIGHT ADAPTORS

BSP - BSP
Mit 60°-Innenkonus und angedrehter Dichtkante
Form B
Männlich - Männlich

With 60°-Cone and Sealing Shoulder Form B
BSP - Male - Male



| Druck Pressure | Gewinde Thread | | Ca. Maße Approx. Dimensions | | | | | | Bestellzeichen Order-Code |
|-------------------|-------------------|-----------|--------------------------------|------|----|------|------|----|------------------------------|
| | G = BSP | G1 = BSP | L | L1 | L2 | D | D1 | SW | |
| 400 | 1/4"-19 | 1/8"-28 | 28,0 | 12,0 | 8 | 6,0 | 4,5 | 19 | 1050510-04-02 |
| 400 | 3/8"-19 | 1/8"-28 | 30,5 | 12,0 | 8 | 9,0 | 4,5 | 22 | 1050510-06-02 |
| 400 | 3/8"-19 | 1/4"-19 | 33,0 | 12,0 | 10 | 9,0 | 6 | 22 | 1050510-06-04 |
| 400 | 1/2"-14 | 1/8"-28 | 34,0 | 14,0 | 8 | 13,0 | 4,5 | 27 | 1050510-08-02 |
| 400 | 1/2"-14 | 1/4"-19 | 38,0 | 14,0 | 11 | 12,5 | 7 | 27 | 1050510-08-04 |
| 400 | 1/2"-14 | 3/8"-19 | 40,0 | 14,0 | 12 | 13,0 | 9 | 27 | 1050510-08-06 |
| 400 | 5/8"-14 | 3/8"-19 | 40,0 | 14,0 | 12 | 14,0 | 8 | 30 | 1050510-10-06 |
| 400 | 5/8"-14 | 1/2"-14 | 42,0 | 16,0 | 14 | 14,5 | 11,5 | 30 | 1050510-10-08 |
| 400 | 3/4"-14 | 1/4"-19 | 39,5 | 16,0 | 10 | 18,0 | 6 | 32 | 1050510-12-04 |
| 400 | 3/4"-14 | 3/8"-19 | 41,0 | 16,0 | 12 | 18,0 | 9 | 32 | 1050510-12-06 |
| 400 | 3/4"-14 | 1/2"-14 | 45,0 | 16,0 | 14 | 18,0 | 13 | 32 | 1050510-12-08 |
| 400 | 3/4"-14 | 5/8"-14 | 45,0 | 16,0 | 16 | 17,0 | 14,5 | 32 | 1050510-12-10 |
| 400 | 1"-11 | 3/8"-19 | 47,0 | 18,0 | 12 | 23,0 | 9 | 41 | 1050510-16-06 |
| 400 | 1"-11 | 1/2"-14 | 48,0 | 18,0 | 14 | 23,5 | 13 | 41 | 1050510-16-08 |
| 400 | 1"-11 | 3/4"-14 | 53,0 | 18,0 | 16 | 23,5 | 17 | 41 | 1050510-16-12 |
| 200 | 1 1/4"-11 | 1/2"-14 | 51,0 | 20,0 | 14 | 30,0 | 13 | 50 | 1050510-20-08 |
| 200 | 1 1/4"-11 | 3/4"-14 | 53,5 | 20,0 | 16 | 30,5 | 18 | 50 | 1050510-20-12 |
| 200 | 1 1/4"-11 | 1"-11 | 58,0 | 20,0 | 18 | 30,5 | 23 | 50 | 1050510-20-16 |
| 200 | 1 1/2"-11 | 3/4"-14 | 55,0 | 22,0 | 16 | 37,0 | 17 | 55 | 1050510-24-12 |
| 200 | 1 1/2"-11 | 1"-11 | 57,0 | 22,0 | 18 | 37,0 | 23,5 | 55 | 1050510-24-16 |
| 200 | 1 1/2"-11 | 1 1/4"-11 | 61,0 | 22,0 | 20 | 37,0 | 30 | 55 | 1050510-24-20 |
| 100 | 2"-11 | 1"-11 | 62,0 | 25,0 | 18 | 43,0 | 23,5 | 70 | 1050510-32-16 |
| 100 | 2"-11 | 1 1/4"-11 | 62,0 | 25,0 | 20 | 45,0 | 30 | 70 | 1050510-32-20 |
| 100 | 2"-11 | 1 1/2"-11 | 64,0 | 25,0 | 22 | 45,0 | 37 | 70 | 1050510-32-24 |