

# GERADE ADAPTER

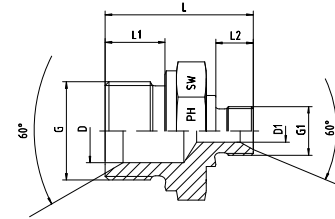
## STRAIGHT ADAPTORS



EDELSTAHL / STAINLESS STEEL  
VERBINDUNGSTECHNIK  
FLUID CONNECTORS

BSP - BSP  
Mit 60°-Innenkonus und angedrehter Dichtkante  
Form B  
Männlich - Männlich

With 60°-Cone and Sealing Shoulder Form B  
BSP - Male - Male



Druck Pressure	Gewinde Thread		Ca. Maße Approx. Dimensions						Bestellzeichen Order-Code
	G = BSP	G1 = BSP	L	L1	L2	D	D1	SW	
400	1/4"-19	1/8"-28	28,0	12,0	8	6,0	4,5	19	1050510-04-02
400	3/8"-19	1/8"-28	30,5	12,0	8	9,0	4,5	22	1050510-06-02
400	3/8"-19	1/4"-19	33,0	12,0	10	9,0	6	22	1050510-06-04
400	1/2"-14	1/8"-28	34,0	14,0	8	13,0	4,5	27	1050510-08-02
400	1/2"-14	1/4"-19	38,0	14,0	11	12,5	7	27	1050510-08-04
400	1/2"-14	3/8"-19	40,0	14,0	12	13,0	9	27	1050510-08-06
400	5/8"-14	3/8"-19	40,0	14,0	12	14,0	8	30	1050510-10-06
400	5/8"-14	1/2"-14	42,0	16,0	14	14,5	11,5	30	1050510-10-08
400	3/4"-14	1/4"-19	39,5	16,0	10	18,0	6	32	1050510-12-04
400	3/4"-14	3/8"-19	41,0	16,0	12	18,0	9	32	1050510-12-06
400	3/4"-14	1/2"-14	45,0	16,0	14	18,0	13	32	1050510-12-08
400	3/4"-14	5/8"-14	45,0	16,0	16	17,0	14,5	32	1050510-12-10
400	1"-11	3/8"-19	47,0	18,0	12	23,0	9	41	1050510-16-06
400	1"-11	1/2"-14	48,0	18,0	14	23,5	13	41	1050510-16-08
400	1"-11	3/4"-14	53,0	18,0	16	23,5	17	41	1050510-16-12
200	1 1/4"-11	1/2"-14	51,0	20,0	14	30,0	13	50	1050510-20-08
200	1 1/4"-11	3/4"-14	53,5	20,0	16	30,5	18	50	1050510-20-12
200	1 1/4"-11	1"-11	58,0	20,0	18	30,5	23	50	1050510-20-16
200	1 1/2"-11	3/4"-14	55,0	22,0	16	37,0	17	55	1050510-24-12
200	1 1/2"-11	1"-11	57,0	22,0	18	37,0	23,5	55	1050510-24-16
200	1 1/2"-11	1 1/4"-11	61,0	22,0	20	37,0	30	55	1050510-24-20
100	2"-11	1"-11	62,0	25,0	18	43,0	23,5	70	1050510-32-16
100	2"-11	1 1/4"-11	62,0	25,0	20	45,0	30	70	1050510-32-20
100	2"-11	1 1/2"-11	64,0	25,0	22	45,0	37	70	1050510-32-24